

Horspath Church of England Primary School  
Blenheim Road, Horspath, OXFORD OX33 1RY  
Tel/Fax 01865 872702  
email: [office.3161@horspath.oxon.sch.uk](mailto:office.3161@horspath.oxon.sch.uk)  
Headteacher: Mrs. Emma Coleman  
Chair of Governors: Mrs. Munaza Dogar

9<sup>th</sup> March 2018

Dear parents,

Thank you for your understanding regarding the school closure last week and particular thanks to those kind parents who gritted the road and pavements by the school. I don't think anyone predicted that the first day of spring would look quite as it did. I was also slightly offended by the naming of the storm that caused it all!

### **World Book Day**

Please come in and have a look at the lovely display of the World Book day themed activities by the playground doors.





### Gold Star Badges

Congratulations to our new gold star badge holders - Rabiya, who received her badge last week, and Freya, who has just received her badge.

### Growth Mindset

I received some very positive feedback about the last set of growth mindset tips so here are some more:

Avoid:	Instead:
It's not right that (another child) keeps messing around and disturbing you when you are trying to work.	There are always distractions, concentrate on what you need to do or ask your teacher if you can work with someone else.
My school work is too easy.	Your teacher gives you a choice of activities, why don't you choose a harder task to challenge yourself.
You only got ½ marks in that test, that's really disappointing.	Keep working hard and practising the things you find tricky and you'll get more right each time.
If your child says – I can't do it.	You can't do it yet but you will! Keep practising and you will get better and better.

### Staff updates

We will be saying goodbye to our SENCo, Chrissie Marshall at the end of this term. Chrissie has been a teacher, pupil progress leader and SENCo in this school for many years. We will miss her!

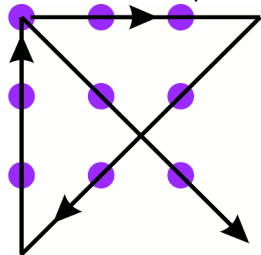
We will also miss Louise Kenworthy who has been supporting Beech Class this year as well as teaching PE with Mrs Cox.

We wish them both all the best for the future.

We will be advertising for a new SENCo after Easter.

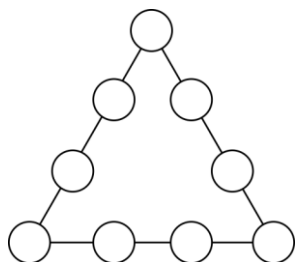
### Puzzle

Solution to the previous puzzle



This week's puzzle

Put the numbers from 1 to 9 in the circles so that the sum of the numbers on each side of a triangle is the same.



### Spring Term dates for your diary:

Friday 9<sup>th</sup> March

Friday 9<sup>th</sup> March

Tuesday 13<sup>th</sup> March

Friday 16<sup>th</sup> March

Wednesday 21<sup>st</sup> March

Thursday 22<sup>nd</sup> March

Friday 23<sup>rd</sup> March

Tuesday 27<sup>th</sup> March

Wednesday 28<sup>th</sup> March

Thursday 29<sup>th</sup> March

Thursday 29<sup>th</sup> March

Easter Holidays

Summer Term:

School Reopens

Friday 27<sup>th</sup> April

**Key Stage 2 SATs Tests**

**Key Stage 1 SATs Tests**

Half Term

School Closes

Class Photos

Family Assembly 2.45pm

PTA Book Sale

French Day

Music Assembly 2.30pm

Dinosaur workshop – Acorn Class

Junior Citizens trip Year 6

*No Family Assembly*

Topic Display 3.15pm School Hall

PTA Easter Egg Tombola and Cake Sale

Topic Display 9.00am School Hall

Cotswold Wildlife Park Trip – Acorn/Beech & Lime

Easter Service 9.15am School Hall

PTA Decorated Egg Competition

School Closes at 1.30pm

30<sup>th</sup> March – 13<sup>th</sup> April

Monday 16<sup>th</sup> April

PTA Disco

**14<sup>th</sup> May – 17<sup>th</sup> May**

**21<sup>st</sup> May – 25<sup>th</sup> May**

28<sup>th</sup> May – 1st June

Wednesday 25<sup>th</sup> July

Yours sincerely,

Mrs Emma Coleman

Head Teacher